

 Inkiostro **Bianco**[®]
CREATIVE THINKING

Inkiostro Bianco è un'azienda specializzata nella produzione di superfici continue e decorativi artistici e personalizzabili.

Un marchio, un progetto ambizioso, un laboratorio di idee applicate alla progettualità e alla produzione di grafiche decorative che ha come obiettivo la reinterpretazione del rivestimento interno per ogni superficie. Nell'offerta di Inkiostro Bianco il mondo dell'arte pittorica e della grafica digitale convergono in creazioni originali dalla forte personalità. Il risultato sono tele emozionali che trasformano le superfici in complementi di design d'avanguardia.

La produzione è interna in tutta le sue fasi: dalla realizzazione delle grafiche, ideate da un network di designers e artisti, alla stampa delle carte con avanzate tecnologie digitali. Tutti progetti caratterizzati da una forte possibilità di personalizzazione.



Inkiostro Bianco is a company specialised in the production of continuous and decorative artistic and customisable surfaces.

It is a brand, an ambitious project and a workshop of ideas applied to the design and production of decorative graphics, whose goal is to reinterpret the interior wall coverings for all surfaces. Pictorial art and digital graphics converge in the Inkiostro Bianco range to form original creations with a strong personality. This results in exciting canvases that transform surfaces into avant-garde design accessories.

All phases of production are carried out internally: from the creation of graphics, conceived by a network of designers and artists, to the printing of paper using advanced digital technologies.

All the projects are characterized by their ability to be customized.





exotic



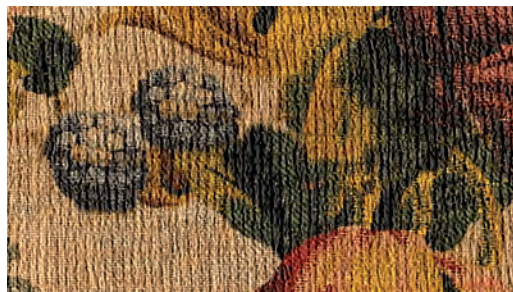
elegant



orient



concrete



La collezione "Undressing Surfaces" è stata studiata per decorativi su superfici multiple (parete, pavimento, soffitto). Ogni declinazione grafica propone la sovrapposizione di elementi che consentono di vestire l'ambiente con creatività. Questa filosofia permette l'utilizzo della collezione su grandi superfici, combinando le grafiche a seconda del progetto.

Con la collezione "Undressing Surfaces" nasce la prima Collezione Contract di Inkiostro Bianco.

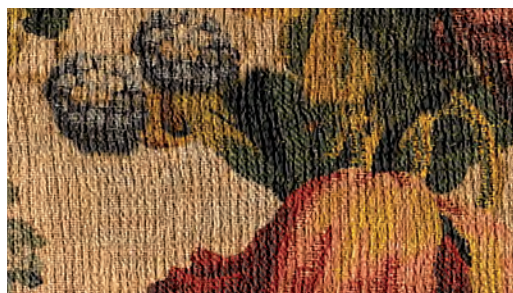
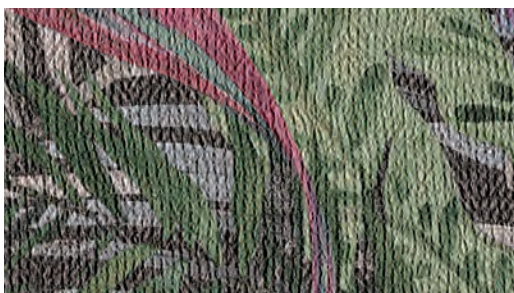
Superfici da svestire

La superficie si sveste e si riveste con la nuova collezione "Undressing Surfaces" realizzata dal laboratorio grafico di Inkiostro Bianco.

I decori si sfogliano fino a spogliare la parete e si sovrappongono nella creazione di un nuovo stile. Pattern e texture si alternano, la possibilità di scelta si amplia grazie alle declinazioni realizzate per ogni grafica: due varianti colore e tre diversi livelli di decoro che permettono un'ulteriore customizzazione. L'ambiente si trasforma, cambia dimensione a seconda del grado di decorazione, il mood muta in base a tendenze e atmosfere, l'ispirazione viene da un processo di ricerca continuo, di contaminazione tra ambienti, stili e pensieri.

Sotto il decoro, la superficie

Il decoro come filosofia, come elemento predominante che caratterizza l'ambiente conferendogli nuova veste. Strumento di espressione di stile e di definizione della materia. Tolto il decoro la superficie rimane nuda, uno spazio spoglio in attesa di identità.





“Undressing Surfaces” Collection has been created for decorations on multiple surfaces (walls, floor and ceiling). Any graphic variance features different elements overlapping and combination thus allowing to creatively “dress” the spaces up. This philosophy breaks into large dimensions surfaces enabling to combine and customize the graphics depending on the project.

“Undressing Surfaces” introduces the first Contract Collection by Inkiostro Bianco.

Undressing Surfaces

The surface is undressed and redressed with the new collection “Undressing Surfaces”, created by the graphics workshop at Inkiostro Bianco.

The decorations are peeled away to undress the wall and overlapped to create a new style. With alternating patterns and textures, the range of choices is further widened by options created for each graphic: two colour variations and three different levels of decoration that allow additional customization. The space is transformed and changes size depending on the degree of decoration. The mood is altered according to trends and atmospheres, and inspiration is drawn from a process of continuous research, contamination between environments, styles and thoughts.

The surface beneath the decoration

Decoration as a philosophy, as the dominant feature that characterizes the space, giving it a new look. A tool for expression, style and defining materials. When the decoration is removed, the surface is left bare - a bare space awaiting its identity.



nest

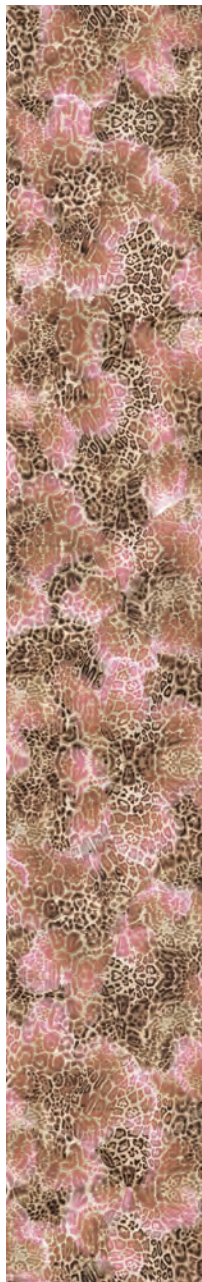
Artist / Designer: **Ink Lab**

Collection: **Undressing surfaces**

Linea / Line: **Exotic**



INKNUEX1501_A



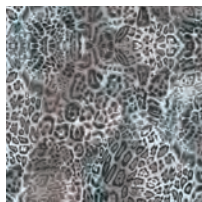
INKNUEX1501_B



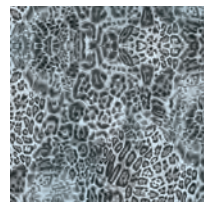
INKNUEX1501_C



INKNUEX1502_A



INKNUEX1502_B



INKNUEX1502_C



dianthus

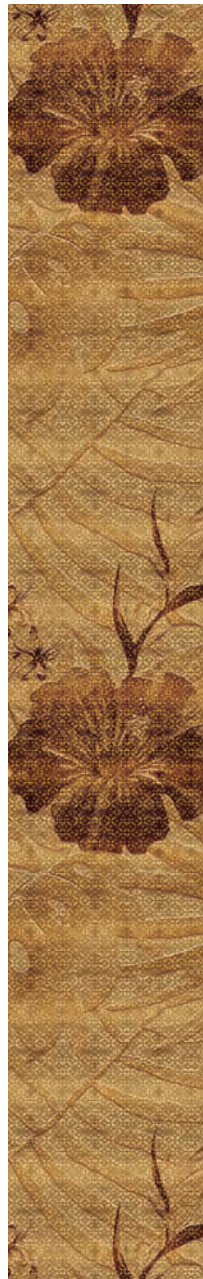
Artist / Designer: **Ink Lab**

Collection: **Undressing surfaces**

Linea / Line: **Exotic**



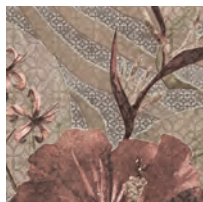
INKFXTF1501_A



INKFXTF1501_B



INKFXTF1501_C



INKFXTF1502_A



INKFXTF1502_B



INKFXTF1502_C

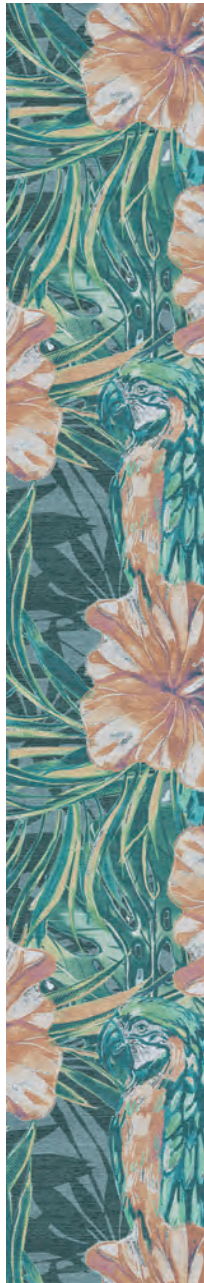


van-gi

Artist / Designer: **Ink Lab**

Collection: **Undressing surfaces**

Linea / Line: **Exotic**



INKDGPF1501_A



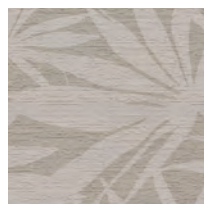
INKDGPF1501_B



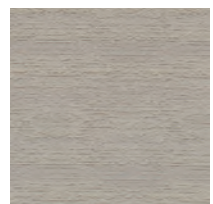
INKDGPF1501_C



INKDGPF1502_A



INKDGPF1502_B



INKDGPF1502_C



tenno

Artist / Designer: **Ink Lab**

Collection: **Undressing surfaces**

Linea / Line: **Exotic**



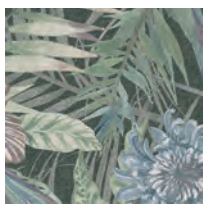
INKEUGM1501_A



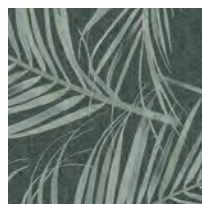
INKEUGM1501_B



INKEUGM1501_C



INKEUGM1502_A



INKEUGM1502_B



INKEUGM1502_C

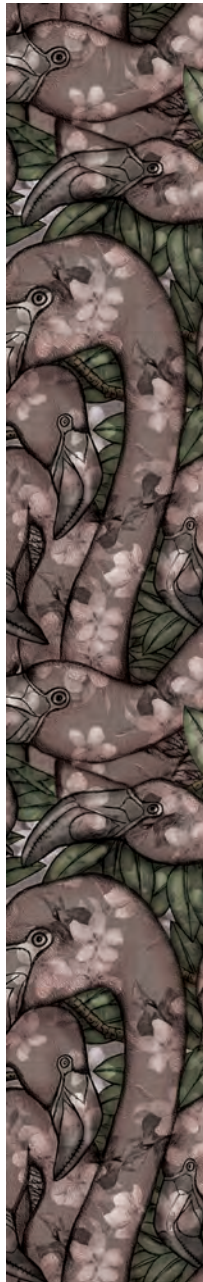


flamenco

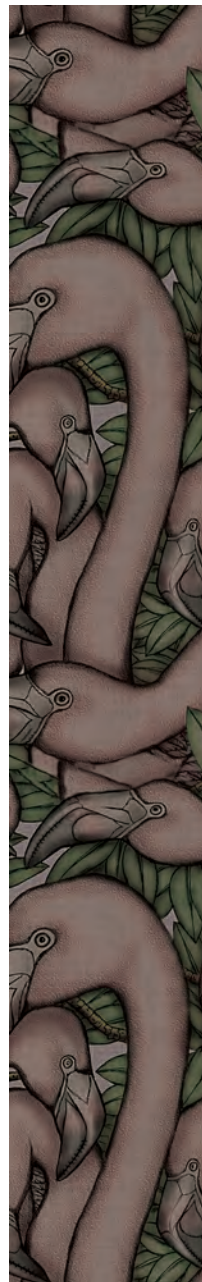
Artist / Designer: **Ink Lab**

Collection: **Undressing surfaces**

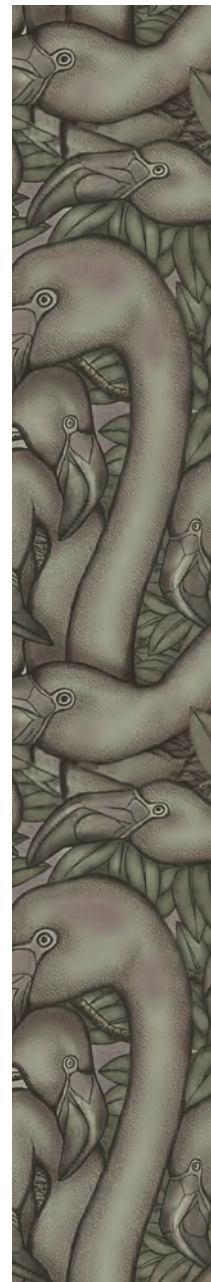
Linea / Line: **Exotic**



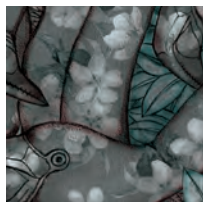
INKQHTJ1501_A



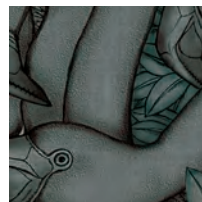
INKQHTJ1501_B



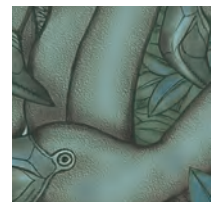
INKQHTJ1501_C



INKQHTJ1502_A



INKQHTJ1502_B



INKQHTJ1502_C



màndala

Artist / Designer: **Ink Lab**

Collection: **Undressing surfaces**

Linea / Line: **Elegant**



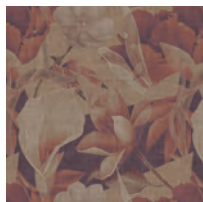
INKINKN1501_A



INKINKN1501_B



INKINKN1501_C



INKINKN1502_A



INKINKN1502_B



INKINKN1502_C



dumalis

Artist / Designer: **Ink Lab**

Collection: **Undressing surfaces**

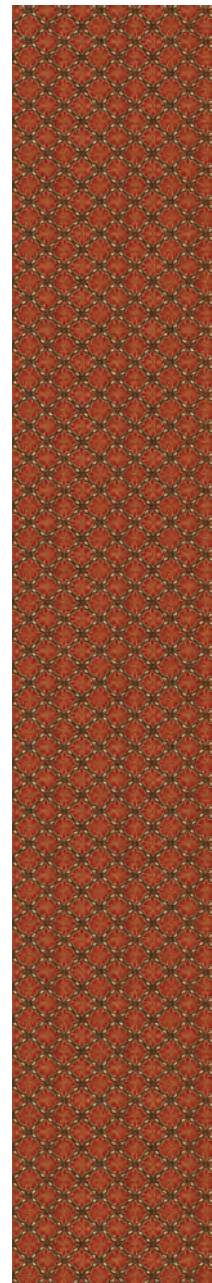
Linea / Line: **Elegant**



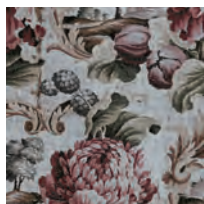
INKEEIN1501_A



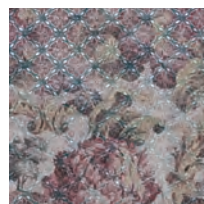
INKEEIN1501_B



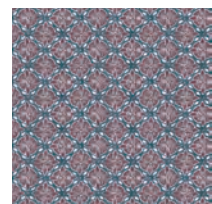
INKEEIN1501_C



INKEEIN1502_A



INKEEIN1502_B



INKEEIN1502_C



prunus

Artist / Designer: **Ink Lab**

Collection: **Undressing surfaces**

Linea / Line: **Elegant**



INKJDDU1501_A



INKJDDU1501_B



INKJDDU1501_C



INKJDDU1502_A



INKJDDU1502_B



INKJDDU1502_C

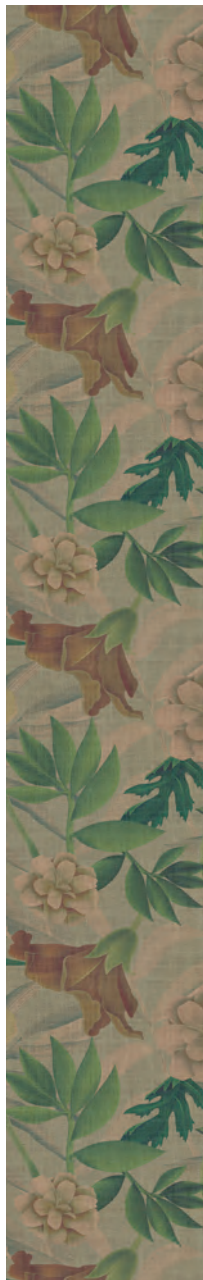


rousseau

Artist / Designer: **Ink Lab**

Collection: **Undressing surfaces**

Linea / Line: **Elegant**



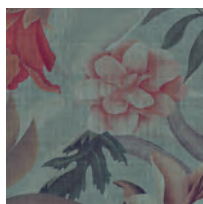
INKDEJE1501_A



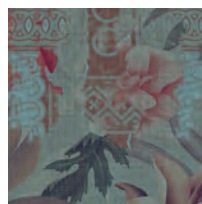
INKDEJE1501_B



INKDEJE1501_C



INKDEJE1502_A



INKDEJE1502_B



INKDEJE1502_C

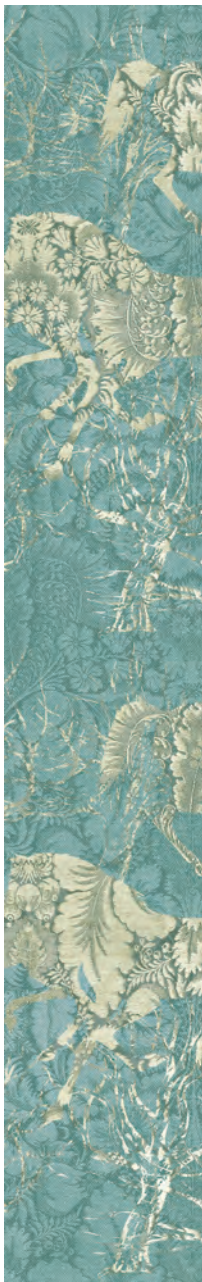


ishtar

Artist / Designer: **Ink Lab**

Collection: **Undressing surfaces**

Linea / Line: **Elegant**



INKRBDI1501_A



INKRBDI1501_B



INKRBDI1501_C



INKRBDI1502_A



INKRBDI1502_B



INKRBDI1502_C



ardeida

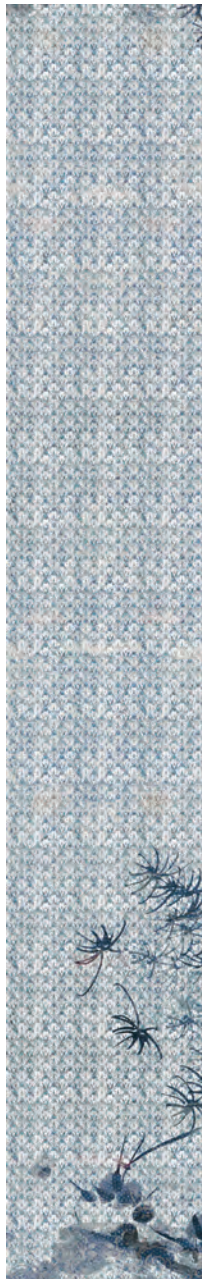
Artist / Designer: **Ink Lab**

Collection: **Undressing surfaces**

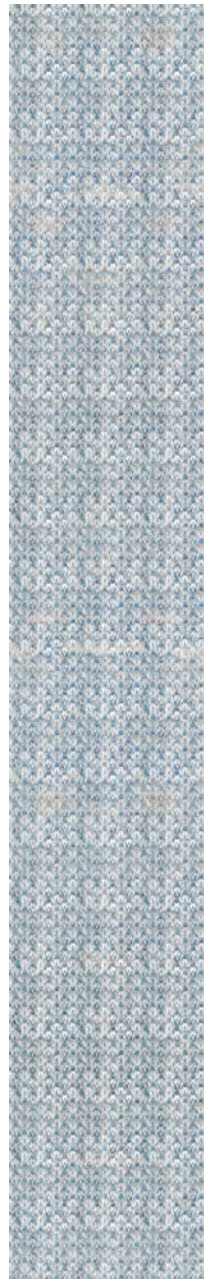
Linea / Line: **Orient**



INKQXSM1501_A



INKQXSM1501_B



INKQXSM1501_C



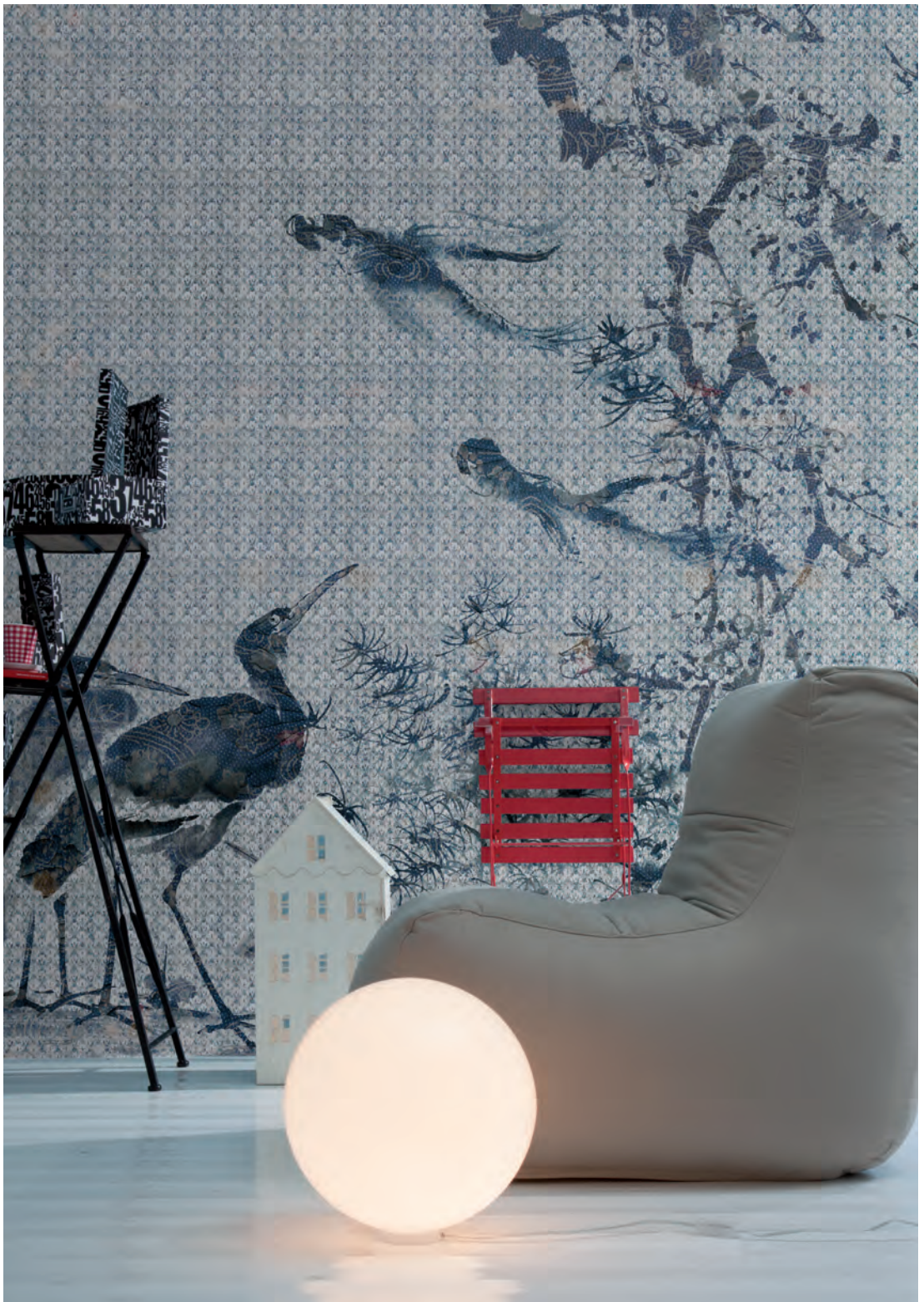
INKQXSM1502_A



INKQXSM1502_B



INKQXSM1502_C



sakura

Artist / Designer: **Ink Lab**

Collection: **Undressing surfaces**

Linea / Line: **Orient**



INKBNLN1501_A



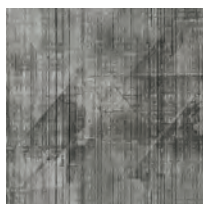
INKBNLN1501_B



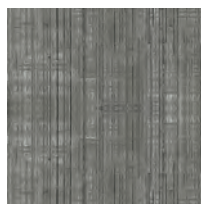
INKBNLN1501_C



INKBNLN1502_A



INKBNLN1502_B



INKBNLN1502_C



hanami

Artist / Designer: **Ink Lab**

Collection: **Undressing surfaces**

Linea / Line: **Orient**



INKAJDC1501_A



INKAJDC1501_B



INKAJDC1501_C



INKAJDC1502_A



INKAJDC1502_B



INKAJDC1502_C

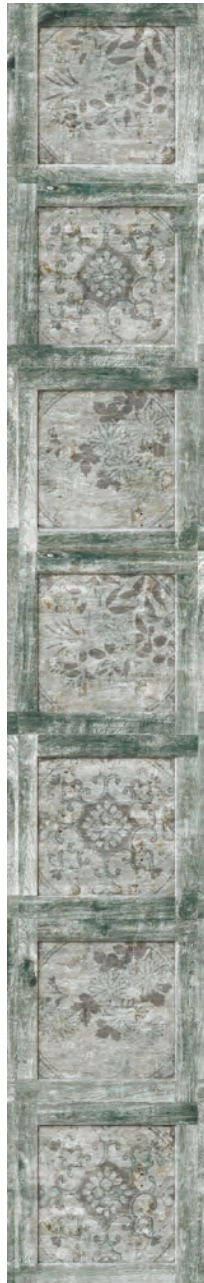


radix

Artist / Designer: **Ink Lab**

Collection: **Undressing surfaces**

Linea / Line: **Orient**



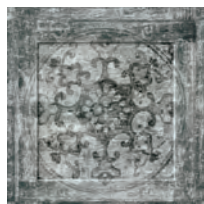
INKIDUN1501_A



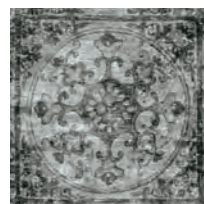
INKIDUN1501_B



INKIDUN1501_C



INKIDUN1502_A



INKIDUN1502_B



INKIDUN1502_C



flora

Artist / Designer: **Ink Lab**

Collection: **Undressing surfaces**

Linea / Line: **Orient**



INKGIEN1501_A



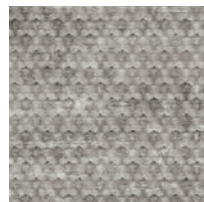
INKGIEN1501_B



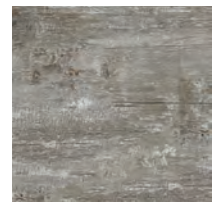
INKGIEN1501_C



INKGIEN1502_A



INKGIEN1502_B



INKGIEN1502_C



e2r2

Artist / Designer:

Ink Lab / Giocoadue

Collection: **Undressing surfaces**

Linea / Line: **Concrete**



INKUUPN1501_A



INKUUPN1501_B



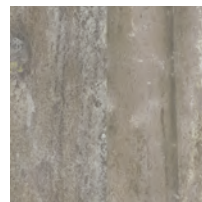
INKUUPN1501_C



INKUUPN1502_A



INKUUPN1502_B



INKUUPN1502_C



portland

Artist / Designer:

Ink Lab / Giocoadue

Collection: **Undressing surfaces**

Linea / Line: **Concrete**



INKIDEK1501_A



INKIDEK1501_B



INKIDEK1501_C



INKIDEK1502_A



INKIDEK1502_B



INKIDEK1502_C



concreto

Artist / Designer:

Ink Lab / Giocoadue

Collection: **Undressing surfaces**

Linea / Line: **Concrete**



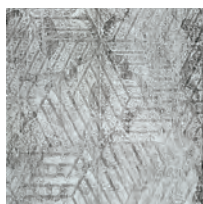
INKUFFF1501_A



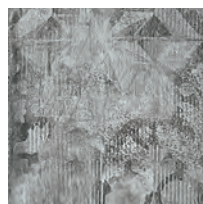
INKUFFF1501_B



INKUFFF1501_C



INKUFFF1502_A



INKUFFF1502_B



INKUFFF1502_C



boise

Artist / Designer:

Ink Lab / Giocoadue

Collection: **Undressing surfaces**

Linea / Line: **Concrete**



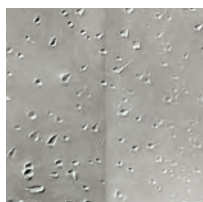
INKHDZA1501_A



INKHDZA1501_B



INKHDZA1501_C



INKHDZA1502_A



INKHDZA1502_B



INKHDZA1502_C



fenz

Artist / Designer:

Ink Lab / Gioco adue

Collection: **Undressing surfaces**

Linea / Line: **Concrete**



INKDOED1501_A



INKDOED1501_B



INKDOED1501_C



INKDOED1502_A



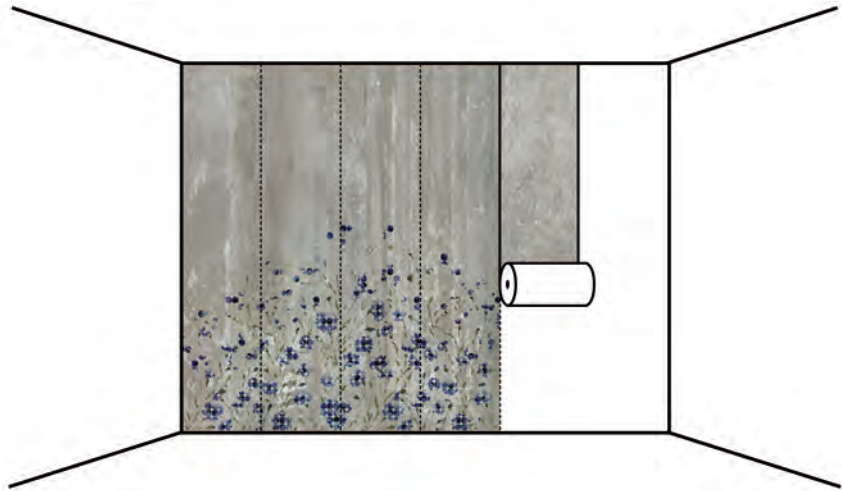
INKDOED1502_B



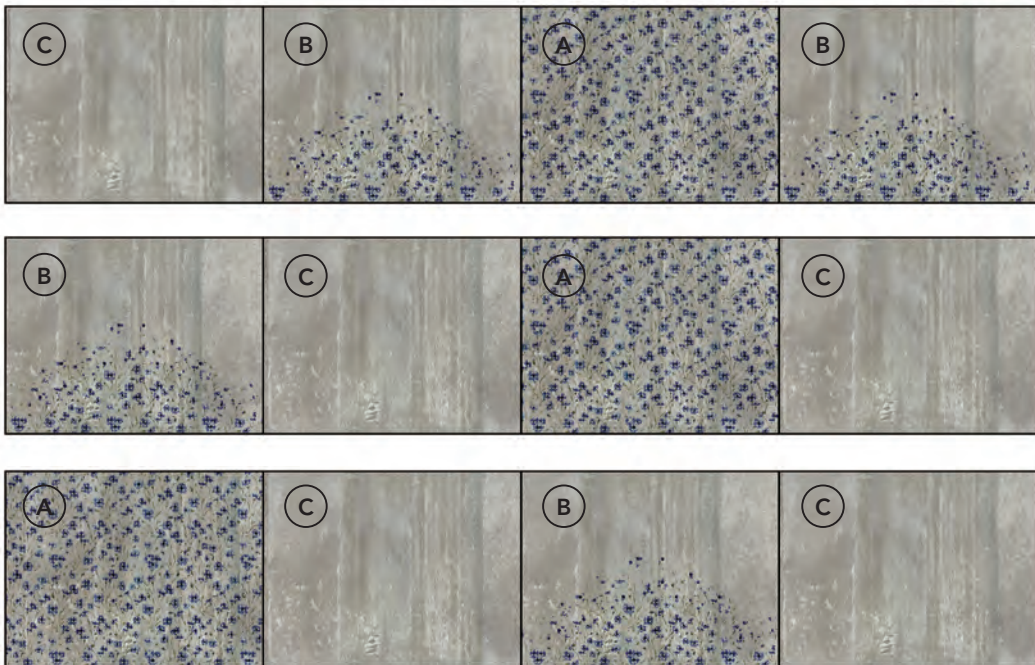
INKDOED1502_C



Metodo di posa: a rotoli / Composition's system: rolls



Esempi di composizione delle grafiche / Graphics combination ideas



Note generali

Tra la riproduzione cartacea sul catalogo e i nostri prodotti possono esserci differenze cromatiche, per la natura stessa dei due sistemi di stampa. Per tal motivo i colori riprodotti nel catalogo sono da ritenersi indicativi.

General notes

There may be slight colour differences between the print reproduction in the catalogue and that of our products, due to the two different printing systems involved. For that reason, the colours represented in the catalogue should be considered for illustrative purposes only.